

*The Leading  
Software  
Solution for  
PK-12 Data  
Warehousing*

The eScholar Complete Data Warehouse® for PK-12 (CDW-PK12) is the most widely-used commercial off-the-shelf (COTS) data warehouse solution designed specifically to support pre-K through 12<sup>th</sup> grade education data requirements. Relied on by 7 state education agencies, supporting over 2,500 school districts and 8 million students, CDW-PK12 transforms the way educators can use the data they collect from the myriad of operational systems and data sources they have installed.

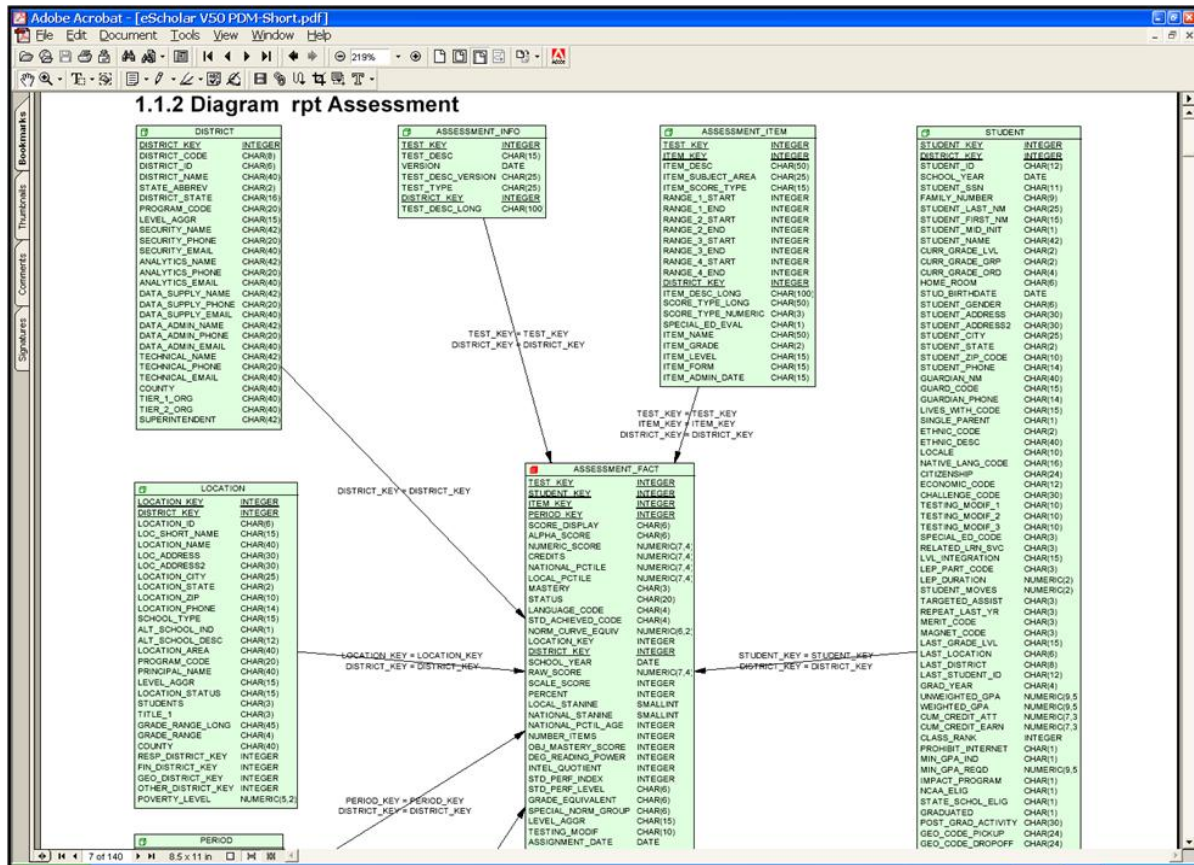
Once loaded into CDW-PK12, the comprehensive set of data provides insight into student, teacher, school, local education agency (LEA), and state education agency (SEA) performance, enabling educators to leverage data-driven decision-making to improve student outcomes. CDW-PK12 is uniquely designed to meet the specific data needs of SEAs and LEAs out-of-the-box, thereby allowing education agencies to dramatically reduce implementation time, risk, and cost while maintaining SIF and NCES standards and meeting NCLB requirements.

#### Key Features of eScholar Complete Data Warehouse® for PK-12

- **Comprehensive Data Model** containing over 2,500 data elements in 38 data domains representing data on students, assessments, staff, facilities, performance, discipline, and more
- **Browser-based Data Submission and Management** enables intuitive data submission by both state and local education agencies in a centralized or decentralized environment
- **Over 2,000 Packaged Data Transformation and Load Routines** integrate data from disparate system-wide data sources into a central repository for longitudinal and multidimensional analysis
- **Complete Support for Collection of Data Elements Required for NCLB, EDEN, and State Reporting**
- **Compatible with both SQL Server and Oracle** database platforms
- **Configurable Data Quality Control** prevents unauthorized and erroneous data from entering the warehouse
- **Compatible with any ODBC-compliant Reporting, Analysis or OLAP Tool**
- **As a Packaged Software Solution** CDW-PK12 is fully documented; includes complete maintenance & support, and access to all product upgrades allowing your warehouse to evolve as your data requirements expand

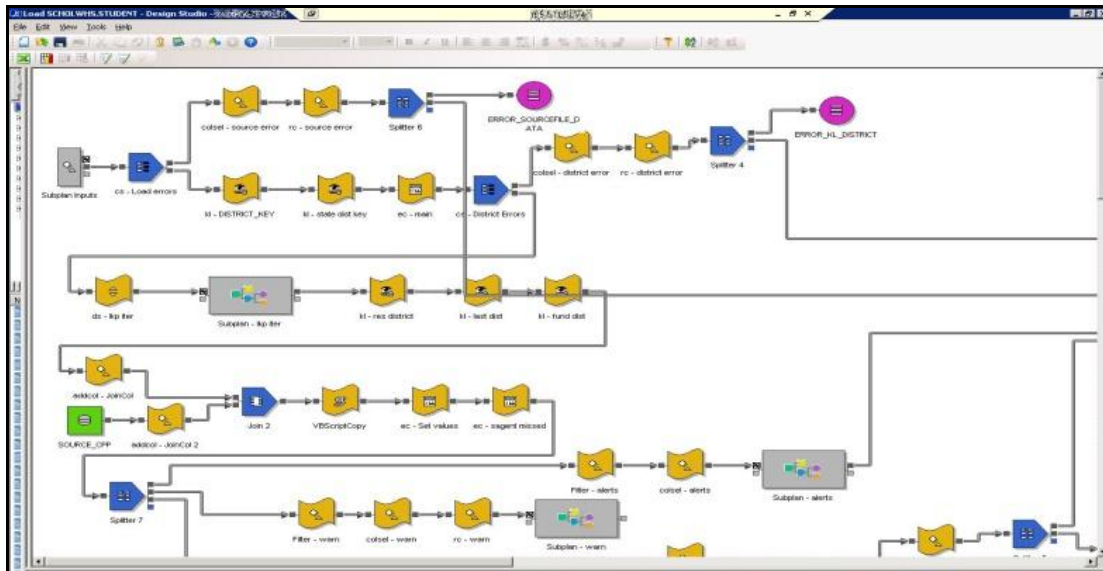
The eScholar Complete Data Warehouse® for PK-12 incorporates a number of key capabilities, including:

**Most comprehensive data model.** With the most robust, highly scalable data model available today, eScholar supports over 2,500 data elements across 30-plus data domains. The data model follows a typical star schema data warehouse design utilizing conformed dimensions - representing the accumulation of twelve years of field experience - and continues to evolve with each release. The eScholar data model covers an ever-expanding breadth of data categories including Student and Staff Demographics, Courses, Grades, Assessments, Special Education, Career and Technical Education, Enrollment, Attendance, Teacher Certification, Discipline, Safe Schools, Surveys, Facilities, Financial, and more. There is no limit on the size or scope of data that can be stored in CDW-PK12. In addition, the eScholar data model captures the lowest level of detail that is available. With over 2,500 data elements in the eScholar data model, new eScholar clients were able to map over 90% of the required data elements out-of-the-box with no enhancement necessary, enabling not only highly successful data warehouse implementations but rapid time to value.



Example - eScholar Complete Data Warehouse incorporates a Star Schema model

**Pre-packaged data transformation and load processes.** CDW-PK12 includes over 2,000 powerful transformation and load routines that ensure the cleanest possible data and enable widely-dispersed source data to be integrated into a single data repository. With this integrated data repository, end users can perform longitudinal and multidimensional analysis of otherwise incongruent data. eScholar load routines have evolved over twelve years of experience loading hundreds of millions of records of education data. eScholar transform and load capabilities include enforced referential integrity, embedded business rules, configurable logic, error logs and more.



Example - eScholar Load Routine

**Integrated data quality, validation and management capability.** CDW-PK12 incorporates an intuitive, browser-based data management capability to quickly manage submission of data by both state and district personnel in a centralized or decentralized environment. Data Administrators can manage receipt and data loading from hundreds of LEAs or schools, manage user access, review and validate data quality, automate retrieval of data files from specific locations, and more.

**eScholar Data Manager**  
Expand Knowledge — Improve the Future

User: swwhite  
District: 000 - PUBLIC EDUCATION DEPARTMENT  
Change District  
Home  
File Manager  
Batch Manager  
Logout

**Admin Functions**  
Broadcast Messages  
Collection Manager  
Data Migration  
Metadata Manager  
System Properties  
Validation Manager

**External Links**  
Unique ID  
Yahoo!

**File Manager**

Date From: 05/24/2007 Date To: 06/18/2007 File Status: All Filter Refresh Page Upload Files

Find File:  by File ID  by File Name Search

File ID	Template	File Name	Received Time	Status**	Actions
<input type="checkbox"/> 194	COURSE	000_COURSE_200704300000.CSV	2007-06-17 14:05	Validation OK	
<input type="checkbox"/> 191	ASSIGNMENT CERTIFICATION RQMT	000_ASSIGN_CERT_RQMT_200702210837.CSV	2007-06-17 14:05	Validation OK	
<input type="checkbox"/> 189	DAY CALENDAR	000_DAY_CALENDAR_200609220054.CSV	2007-06-17 14:05	Validation OK	
<input type="checkbox"/> 188	DAY CALENDAR	000_DAY_CALENDAR_200609220052.CSV	2007-06-17 14:05	Validation OK	
<input type="checkbox"/> 187	DAY CALENDAR	000_DAY_CALENDAR_200609220051.CSV	2007-06-17 14:05	Validation OK	
<input type="checkbox"/> 186	STUDENT	000_STUDENT_200705111234.CSV	2007-06-17 14:05	Validation OK	
<input type="checkbox"/> 185	STUDENT	000_STUDENT_200705111233.CSV	2007-06-17 14:05	Validation OK	
<input type="checkbox"/> 184	STUDENT	000_STUDENT_200705111232.CSV	2007-06-17 14:05	Validation OK	
<input type="checkbox"/> 183	STUDENT	000_STUDENT_200705111231.CSV	2007-06-17 14:05	Validation OK	
<input type="checkbox"/> 182	STUDENT	000_STUDENT_200705111230.CSV	2007-06-17 14:05	Validation OK	
<input type="checkbox"/> 181	STUDENT	000_STUDENT_200705111229.CSV	2007-06-17 14:05	Validation OK	
<input type="checkbox"/> 180	STUDENT	000_STUDENT_200705111228.CSV	2007-06-17 14:05	Validation OK	

Displaying 1 to 12 of 99 First Prev Next Last

\*\*Only files with a status of 'Validation OK' OR 'Validation Warning' can be added to a batch  
Add to Batch Delete Refresh Page

Example – Browser-based data submission and management

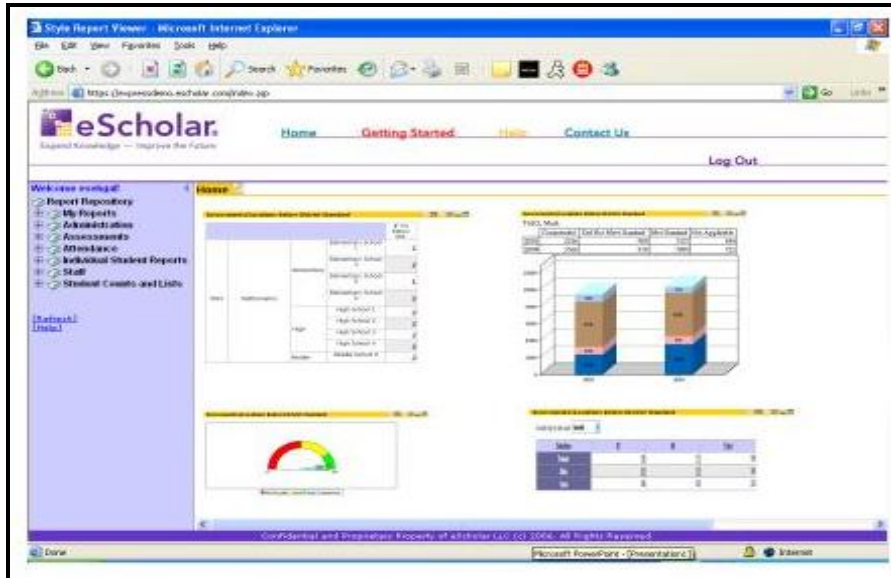
**Pre-packaged assessment extracts.** The eScholar assessment domain provides the flexibility to define an infinite number of tests, accommodating test components in a hierarchy of up to four levels. eScholar provides over 200 assessment extract plans covering 50+ different national and state-level tests, including SAT, PSAT, ACT, MAP (Measures of Academic Progress), SAT-10, DIBELS (Dynamic Indicator Basic Early Literacy Skills), Acuity national assessments and many more. eScholar supports more than 150 different data formats and is constantly expanding that coverage.

***Integrated security management capability.*** Security is a very important consideration in the deployment of the eScholar Solution. eScholar includes built-in security management capabilities that allow the security profile of each user to be unique and limited based on domain of data, time period, location, group of students or any other method of controlling access rights. All data accesses are logged and can be audited. These powerful security features are invoked regardless of how data is accessed, whether using eScholar reporting tools, Cognos, SPSS, etc. Finally, data delivered to web-based reporting tools is encrypted via SSL.

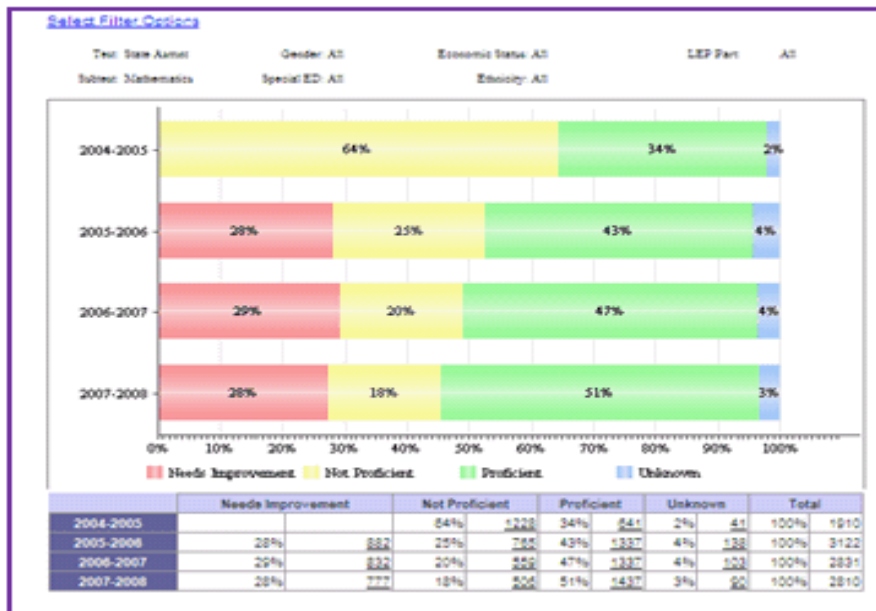
In addition, the eScholar Complete Data Warehouse includes all of the capabilities necessary to maintain data integrity and security. The ETL processes and Meta Data maintain information regarding the transformations of every data element from the original source to the data warehouse. The data warehouse includes the ability to manage read-only query environment that ensures that no data is modified without authorization. In addition, eScholar supports the user of individual user profiles that limit user access rights all the way down to the underlying database level.

Access to sensitive student data needs to be tightly controlled while giving appropriate access to a wide variety of users. eScholar applies security at the database level giving the district the strongest possible security while allowing flexibility of access.

**Standards-based support for reporting and analysis tools.** . Any SQL or ODBC compliant reporting or analytical tool can work with eScholar. eScholar customers are accessing CDW-PK12 using a number of leading reporting and analysis products from vendors such as, SAP BusinessObjects, Oracle, IBM Cognos, SPSS, InetSoft and others.



Example - Dashboard using an off-the-shelf reporting product



Example – Summary report using an off-the-shelf ODBC-compliant reporting tool

## OPTIONAL PRODUCT ADD-ON'S

*eScholar offers several additional products and services associated with CDW-PK12, including:*

- ***eScholar EDEN Solution™***. In response to USDE EdFacts Reporting requirements, eScholar worked closely with several state clients to develop processes for compiling EDEN-required data from either the data residing in CDW-PK12 or data from other sources. Using eScholar to produce EDEN files allows each state to concentrate on the content and quality of the underlying data, rather than on the mechanics of applying the necessary formatting, calculation, aggregation, and file naming rules to each of the approximately 80 required EDEN files per school year.
- ***eScholar Framework™ for COGNOS®***. eScholar provides a reporting and analytics metadata model that helps facilitate the design-, development and running of reports off of CDW-PK12 using COGNOS ReportNet and PowerPlay products.

## ***Why eScholar?***

- The leader in education data management, providing successful statewide solutions for 11 SEAs, supporting over 3,500 school districts and over 12 million students across the country.
- Focused exclusively on the education data management industry since 1997.
- Comprehensive services, training and support programs to ensure customer success.
- An established, active user community allowing access to best practices, experience, and support from peers nationwide

Today, our products have become the recognized standards in the student and staff identification and educational data warehousing markets. The eScholar Complete Data Warehouse® solution has become an indispensable solution to local and state education agencies for integrating and managing the vast quantity of information they collect on students, programs, teachers and much more. For more information, contact Sales at [sales@escholar.com](mailto:sales@escholar.com) or (877) 328-2969