

With the increasing emphasis by both federal and state agencies on implementing systems that enable data-driven decision making to improve education outcomes, state departments of education and local education agencies (LEAs) need the ability to implement data warehouse and BI/analytics capabilities rapidly.

Furthermore, they need the ability to collect and integrate education data across a vast and expanding scope of enterprise systems and functional areas. The system must be robust, scalable, user-friendly, configurable, and intuitive, and must include not only collection, integration, and storage capabilities within a web-based footprint, but must also incorporate configurable data quality and error handling workflow to supplement the often inadequate data quality checks built into legacy transactional systems. And with budgets shrinking, they need to develop or acquire such a system at a total-cost-of-ownership well below what a comparable private-sector corporation would spend.

It's a tall order. Fortunately, the eScholar Complete Data Warehouse® solution delivers it all, and with fourteen years as the leader in education data warehousing, our products have been evolving each year along with your needs.

## Key Features and Benefits of the eScholar Complete Data Warehouse® Solution

- Web-based Footprint
- Configurable Data Quality Control
- Most Comprehensive Data Model
- Full Suite of Packaged Data Transformation and Load Routines
- Packaged ETL Supporting Third-Party Assessment Results Data
- Full Support for Federal and State Reporting Requirements
- Compatible with both Microsoft SQL Server and Oracle
- Compatible with any ODBC-compliant Reporting, Analysis or OLAP Tool
- Fully Documented COTS Solution
- Comprehensive Maintenance and Support Package

### **Web-based Footprint**

The eScholar CDW incorporates eDM, an intuitive, browser-based data management tool to seamlessly manage submission of data by both state and district personnel in a centralized or decentralized environment. The interface allows Data Administrators to configure the system – data collection periods, data sets to be collected, data quality checks, user access, roles, and permissions, event-triggered email notification, automation, and more. eDM manages receipt and loading of data from hundreds of LEAs or schools, or from

state facilities, and presents load statistics and user-friendly data quality and data error reports to appropriate parties.

District Information		
<p>Available Districts</p> <ul style="list-style-type: none"> <li>default state agency</li> <li>DISTRICT 200</li> <li>DISTRICT 202</li> <li>DISTRICT 205</li> <li>DISTRICT 206</li> <li style="background-color: #0070C0; color: white;">DISTRICT 207</li> <li>DISTRICT 208</li> <li style="background-color: #0070C0; color: white;">DISTRICT 209</li> <li style="background-color: #0070C0; color: white;">DISTRICT 210</li> <li>DISTRICT 211</li> </ul>	<p>&gt;</p> <p>&gt;&gt;</p> <p>&lt;&lt;</p> <p>&lt;</p>	<p>Selected Districts</p> <ul style="list-style-type: none"> <li>DISTRICT 201</li> <li>DISTRICT 203</li> <li>DISTRICT 204</li> </ul>
Template Information		
<p>Available Templates</p> <ul style="list-style-type: none"> <li style="background-color: #0070C0; color: white;">STUDENT INFRACTION</li> <li style="background-color: #0070C0; color: white;">STUDENT INFRACTION RESPONSE</li> <li>STUDENT LITE</li> <li>STUDENT LOCATION</li> <li>STUDENT OVERRIDE LOOKUP</li> <li style="background-color: #0070C0; color: white;">STUDENT PERIOD ATTENDANCE</li> <li>STUDENT SEGMENT DETAILS</li> <li>STUDENT SNAPSHOT</li> <li>STUDENT SUMMARY ATTENDANCE</li> <li>SURVEY INFORMATION</li> </ul>	<p>&gt;</p> <p>&gt;&gt;</p> <p>&lt;&lt;</p> <p>&lt;</p>	<p>Selected Templates</p> <ul style="list-style-type: none"> <li>STUDENT</li> <li>STUDENT CLASS ENTRY EXIT</li> <li>STUDENT CLASS GRADE DETAIL</li> </ul>
<p>Add Collection    Cancel</p>		
<p><small>Copyright © 2011, eScholar LLC</small></p>		

Automation Notification Manager	
General	Automation
<b>Collection Notifications</b>	
Send Notification When Collection Opens	<input type="radio"/> Yes <input checked="" type="radio"/> No
Send Notification When Collection Closes	<input type="radio"/> Yes <input checked="" type="radio"/> No
Send 1st Reminder Message	<input type="radio"/> Yes <input checked="" type="radio"/> No
1st Reminder Message - Number Days Before Close	<input type="text" value="14"/>
Send 2nd Reminder Message	<input type="radio"/> Yes <input checked="" type="radio"/> No
2nd Reminder Message - Number Days Before Close	<input type="text" value="7"/>
Send 3rd Reminder Message	<input type="radio"/> Yes <input checked="" type="radio"/> No
3rd Reminder Message - Number Days Before Close	<input type="text" value="2"/>
<p>Save    Cancel</p>	
<p><small>Copyright © 2011, eScholar LLC</small></p>	

## Configurable Data Quality Control

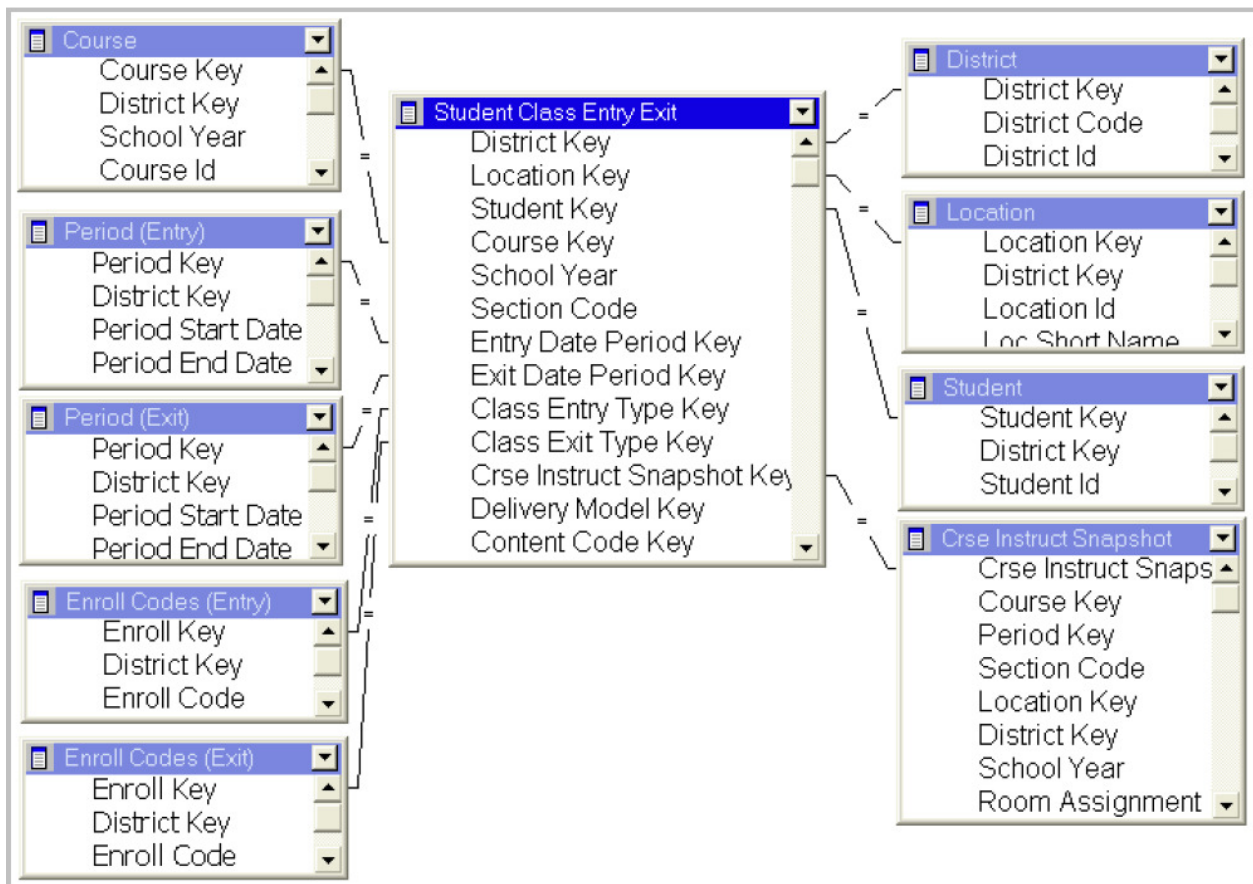
eDM gives administrators the flexibility to configure and control who submits what data, when, how, and with what density and data quality requirements. No other SLDS product in the education market offers the depth and breadth of control that eScholar does at the click of a mouse.

Collection Manager: 40th Day Collection - STUDENT SNAPSHOT		
<a href="#">Collection</a> / <a href="#">Templates</a> / <a href="#">Validations</a>		
Template Field	Required	No Valued Allowed
DISTRICT CODE	<input checked="" type="checkbox"/>	<input type="checkbox"/>
LOCATION CODE	<input checked="" type="checkbox"/>	<input type="checkbox"/>
SCHOOL YEAR DATE	<input checked="" type="checkbox"/>	<input type="checkbox"/>
STUDENT ID	<input checked="" type="checkbox"/>	<input type="checkbox"/>
SOCIAL SECURITY NUMBER	<input type="checkbox"/>	<input checked="" type="checkbox"/>
FAMILY NUMBER	<input type="checkbox"/>	<input type="checkbox"/>
LAST NAME SHORT	<input checked="" type="checkbox"/>	<input type="checkbox"/>
FIRST NAME SHORT	<input checked="" type="checkbox"/>	<input type="checkbox"/>
MIDDLE INITIAL	<input type="checkbox"/>	<input type="checkbox"/>
CURRENT GRADE LEVEL	<input checked="" type="checkbox"/>	<input type="checkbox"/>
OBSOLETE	<input type="checkbox"/>	<input type="checkbox"/>
OBSOLETE	<input type="checkbox"/>	<input type="checkbox"/>
HOME ROOM	<input type="checkbox"/>	<input type="checkbox"/>
BIRTH DATE	<input checked="" type="checkbox"/>	<input type="checkbox"/>
GENDER CODE	<input checked="" type="checkbox"/>	<input type="checkbox"/>
ADDRESS 1	<input type="checkbox"/>	<input type="checkbox"/>
ADDRESS 2	<input type="checkbox"/>	<input type="checkbox"/>
CITY	<input type="checkbox"/>	<input type="checkbox"/>
STATE CODE	<input type="checkbox"/>	<input type="checkbox"/>

Source Record Number	DISTRICT CODE	LOCATION CODE	SCHOOL YEAR DATE	STUDENT ID	SOCIAL SECURITY NUMBER	FAMILY NUMBER	LAST NAME SHORT	FIRST NAME SHORT	MIDDLE INITIAL	CURRENT GRADE LEVEL	OBSOLETE	OBSOLETE	HOME ROOM	BIRTH DATE	GENDER CODE	ADDRESS 1	ADDRESS 2
1	205	1000	2009-06-30	7544994783						002			HR204	2001-09-29	F		
2	205	1000	2009-06-30	8741780981	111111111					ABC			HR403	1999-04-01	F		
3	205	1000	2008-06-30	1224288149						003			HR301	2000-03-31	M		
4	205	1000	2009-06-30	AAAAAAA						003			HR304	2000-12-05	M		
5	205	1000	2009-06-30	3308453843						PKP			HRK04	2003-05-02			
6	205	1000	2009-06-30	4342385937						001			HR104	2002-02-30	F		
7	205	1000	2009-06-30	5067455861						003			HR301	2000-12-31	F		
8	205	1000	2009-06-30	7194043939						004			HR401	1999-06-22	F		
9	205	1000	2009-06-30	4611084876						PKP			HRK03	2003-12-23	M		
10	205	1000	2009-06-30	5769486872						001			HR103	2002-02-17	M		
11	205	1000	2009-06-30	9112054038						004			HR401	1999-12-27			
12	205	1000	2009-06-30	9274146213									HR302	2000-02-22	M		
13	205	1000	2009-06-30	2693890438						004			HR404	1999-04-19	M		
14	205	1000	2009-06-30	3268652689						003			HR301	2000-08-30	M		
15	205	1000	2009-06-30	6481237718						002			HR201	2001-01-09	F		
16	205	1000	2009-06-30	8747822694						003			HR301	2000-07-06	M		

## Most Comprehensive Data Model

With the most comprehensive, robust, and **scalable** data model available today, eScholar's P-20 SLDS solution supports over 3,000 data elements across more than 40 data categories. The data model follows a typical star schema data warehouse design utilizing conformed dimensions. The data model reflects fourteen years of field experience and continues to expand and evolve with each release. The eScholar data model integrates an ever-expanding breadth of elements across data categories including Student and Staff Demographics, Courses, Grades, Assessments, Academic Standards, Programs & Services, Special Education, Career and Technical Education, Enrollment, Attendance, Staff Development, Certification, and Evaluation, Discipline and Safe Schools, Surveys, Facilities, Financials, and much more, all at the most atomic level of detail. eScholar's robust data model means new clients are typically able to **map over 90% of their required data elements out-of-the-box** with no enhancement necessary, enabling not only highly successful data warehouse implementations but **rapid time to value**.



## Packaged Data Transformation and Load Routines

The eScholar Complete Data Warehouse® ships with hundreds of powerful transformation and load routines that ensure the cleanest possible data and enable widely-dispersed source data to be integrated into a single data repository. As a result, customers can perform longitudinal and multidimensional analysis of otherwise siloed data. eScholar load routines have evolved over fourteen years of experience loading hundreds of millions of records of education data. Operations include enforcing referential integrity, data quality checks leveraging embedded business rules and configurable logic, error handling and error log output, and data inserts and updates.

This out-of-the-box capability enables our customers to hit the ground running, saving countless man-hours of effort and contributing to rapid implementation and demonstration of value. No competitor in the marketplace can match it.

**Menu**

- Home
- Upload
- File Manager
- Batch Manager
- Approved Collections
- Admin Menu**
- Automation
- Broadcast Messages
- Collection Manager
- Admin Collection
- Etl Plan Configuration
- System Properties
- Notification Manager
- Admin Reports
- Data Prep & Conditioning Routines
- External Links**
- Uniq-ID
- eScholar Products

### Data Prep & Conditioning Routines

Begin Plan Runner Process

Status

Step 1 : Select Plan Type

Plan Types EDM P12 UTILITY

Step 2 : Select Plan

Plans\* ▼

Load Z\_ESCHOLAR\_METADATA

Load SCHOLWHS.STUD\_SNAPSHOT from STUDENT

Load SCHOLWHS.LOCATION\_YEAR from LOCATION

Extract Data for New School Year

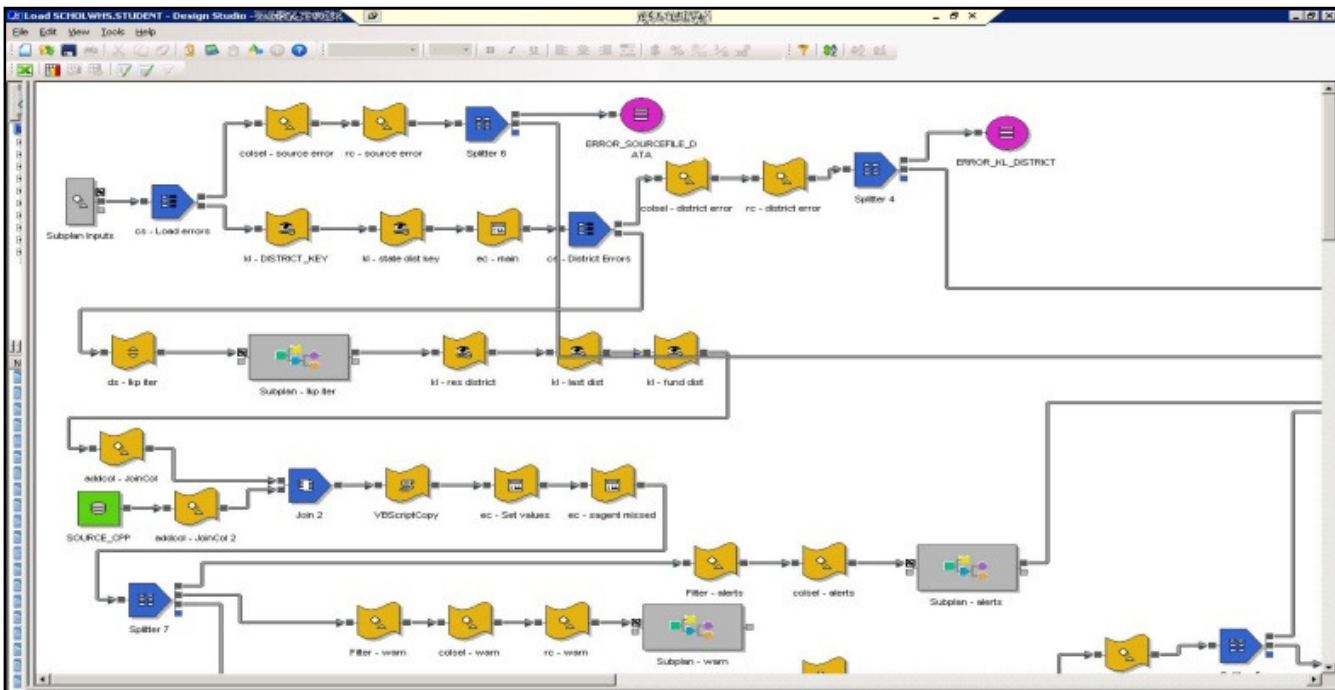
Extract Data for New Fiscal Year

Extract Calendar Period Template

Delete REASONS\_FACT\_AND\_DISORDERS\_FACT

Config

*Copyright © 2011, eScholar LLC*



## Packaged ETL Supporting Third-Party Assessment Results Data

Loading assessment data to your SLDS is critical to success of the project. eScholar delivers a suite of transformation routines designed to get test results data out of the hundreds of different flat file formats that test vendors provide, and into your warehouse. We are always expanding the scope of our coverage, and support over 50 distinct tests today from SAT and ACT to DIBELS, MAP, ACUITY, and many more.

**Menu**

- Home
- Upload
- File Manager
- Batch Manager
- Approved Collections

**Admin Menu**

- Automation
- Broadcast Messages
- Collection Manager
- Admin Collection
- Etl Plan Configuration
- System Properties
- Notification Manager
- Admin Reports
- Data Prep & Conditioning Routines

**External Links**

- Uniq-ID
- eScholar Products

**Data Prep & Conditioning Routines**

**Begin Plan Runner Process** [Status](#)

Step 1 : Select Plan Type

Plan Types EDM ASSESSMENTS ▾

Step 2 : Select Plan

Plans\* 2011 DIBELS ▾

- 2011 SAT
- 2011 PSAT
- 2011 ACT
- 2011 DIBELS

Configur el

Copyright © 2011, eScholar LLC

## Full Support for Federal and State Reporting Requirements

With the most comprehensive data model in education data warehousing, your data collection needs are covered with respect to federal and state reporting mandates including NCLB, EdFacts/EDEN, and CSPR. In fact for your EdFacts requirements, eDM provides a GUI into the eScholar EDEN Solution™, a separately licensed product that sources data from the eScholar CDW or outside data sources, loads it to a data mart for evaluation, and produces all EDEN data files in the required formats with required file names so they can be submitted to the EdFacts portal. The eScholar EDEN Solution saves customers valuable time and money by taking the maintenance burden off your hands, letting you concentrate on the quality of the data being submitted rather than the rules governing required data, required values, formats, level of aggregation, and file naming conventions. And our solution guides you through the process step by step via web browser and a few mouse clicks. No other vendor in the marketplace delivers a workflow tool like this for EdFacts file creation.

**EDEN Batch Manager**

Begin EDEN Process
Status

Step 1 : Select School Year

School Years

Step 2 : Select EDEN Plan Type

EDEN Plan Types

Step 3 : Select EDEN Plan

EDEN Plans\*

**Configure PI**

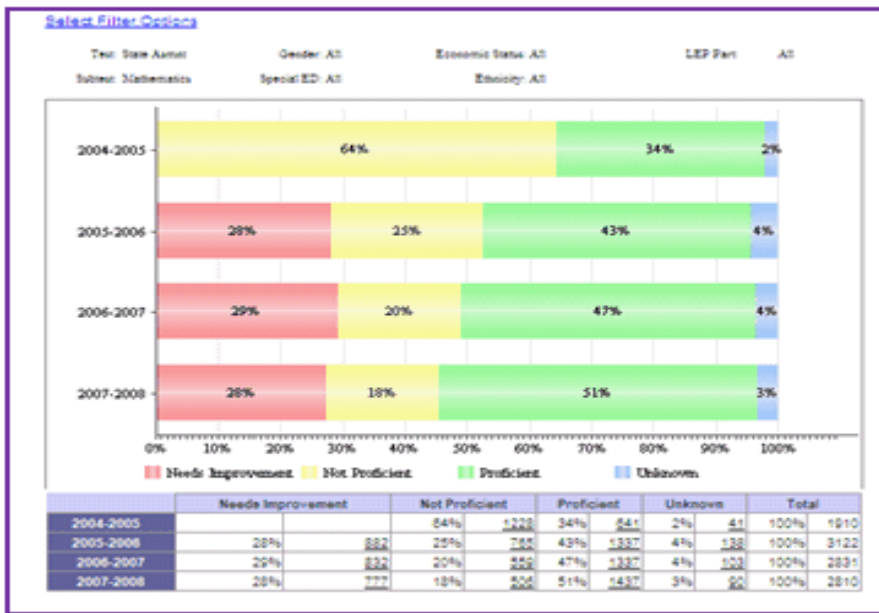
- [002] EDEN Extract CWD\_SCHOOL\_AGE SY2011
- [029] EDEN Extract DIRECTORY SY2011
- [033] EDEN Extract FREE\_AND\_REDUCED\_PRICE\_LUNCH SY2011
- [039] EDEN Extract GRADES\_OFFERED SY2011
- [046] EDEN Extract LEP\_STUDENTS\_IN\_LEP\_PROGRAM SY2011
- [052] EDEN Extract MEMBERSHIP SY2011
- [059] EDEN Extract STAFF\_FTE SY2011
- [089] EDEN Extract CWD\_EARLY\_CHILDHOOD SY2011
- [129] EDEN Extract CCD\_SCHOOL SY2011
- [130] EDEN Extract ESEA\_STATUS SY2011

### Fully Documented COTS Solution

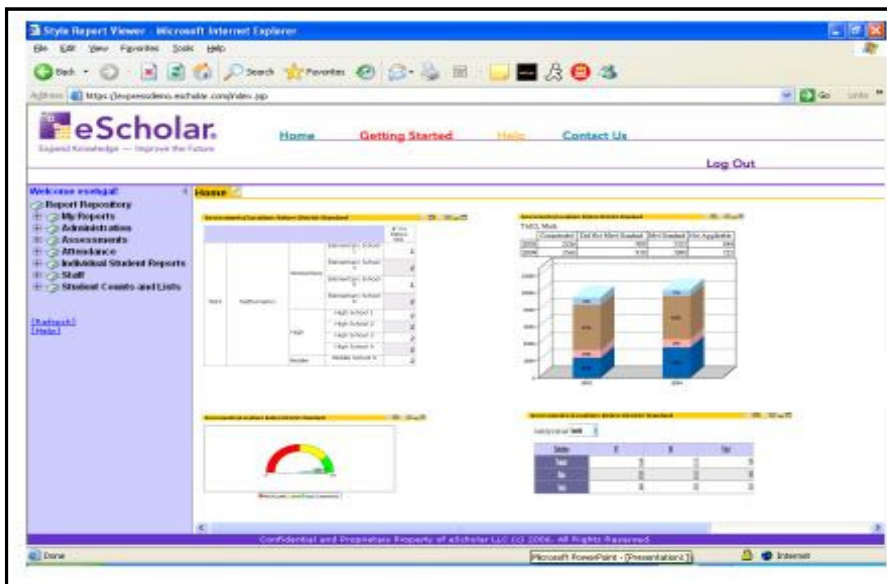
The eScholar CDW comes fully documented, with sets of documentation targeted to specific users. System and Technical documentation, User Guides, Best Practices, and video tutorials are all available from our support site.

### Standards-based Support for Reporting and Analysis Tools

Any SQL or ODBC compliant reporting or analytical tool can work with CDW-PK12. CDW-PK12 takes complete advantage of the security capabilities of these products and the data delivered to web-based reporting tools is encrypted via SSL. eScholar customers are accessing CDW-PK12 using a number of leading reporting and analysis products from vendors such as, SAP BusinessObjects, Oracle, IBM Cognos, SPSS, InetSoft and others.



Example - Summary report using an off-the-shelf ODBC-compliant reporting tool



Example - Dashboard using an off-the-shelf reporting product

### eScholar Complete Data Warehouse® Components

The eScholar CDW is a fully documented commercial off-the-shelf (COTS) P-20 education data warehousing solution. The P-20 solution is comprised of two main data warehousing solutions that can be licensed as a whole for a P-20 solution, or may be licensed individually as stand-alone products.

- **eScholar Complete Data Warehouse® for PK-12 (CDW-PK12)** – Nearly fourteen years ago eScholar recognized the need for and was first to market with a COTS data warehousing solution for PK-12 education. Our data model and associated software – packaged data transformation and load routines,

graphical user interface, configurable data quality capabilities, full suite of documentation – has evolved to meet increasingly rigorous and expansive customer requirements, business/stakeholder needs, and legislative mandates.

- **eScholar Complete Data Warehouse® for Postsecondary (CDW-PS)** - In response to growing demand for insight into student achievement and success beyond their PK-12 education, eScholar introduced the eScholar CDW-PS. This standalone COTS solution includes the capability to integrate with the CDW-PK12, offering SEAs a comprehensive P-20 SLDS package that enables sophisticated analysis of a full spectrum of education data within the context of students, teachers, programs, budgets, and more.

## Optional Product Add-Ons

eScholar offers several additional products and services associated with the eScholar CDW, including:

- **eScholar EDEN Solution™** - In response to US Department of Education's EdFacts Reporting requirements, eScholar worked closely with several state clients to develop processes for compiling Education Data Exchange Network (EDEN)-required data. Data can originate from either the CDW-PK12 or external sources. Using eScholar to produce EDEN files allows each state to concentrate on the content and quality of the underlying data, freeing state agencies from the mechanics of applying the necessary formatting, calculation, aggregation, and file naming rules to each of the approximately 80 required EDEN files per school year.
- **eScholar Framework™ for COGNOS®** - eScholar provides a reporting and analytics metadata model that helps facilitate the design, development and running of reports against the CDW-PK12 data model. The framework supports COGNOS ReportNet and PowerPlay products.

## Why eScholar?

- *The leader in education data management, providing successful statewide solutions for 12 SEAs, supporting over 3,500 school districts and over 13 million students across the country.*
- *Focused exclusively on the education data management industry since 1997.*
- *Comprehensive services, training and support programs to ensure customer success.*
- *An established, active user community allowing access to best practices, experience, and support from peers nationwide*

*Today, our products have become the recognized standards in the student and staff identification and educational data warehousing markets. The eScholar Complete Data Warehouse® solution has become an indispensable solution to local and state education agencies for integrating and managing the vast quantity of information they collect on students, programs, teachers and much more. For more information, visit [www.escholar.com](http://www.escholar.com) or contact us at [sales@escholar.com](mailto:sales@escholar.com) or (877) 328-2969.*

eScholar LLC ©2011 All Rights Reserved.

eScholar, eScholar Complete Data Warehouse, eScholar EDEN Solution, and eScholar Framework are trademarks or registered trademarks of eScholar LLC in the United States. Specification subject to change without notice.

CDW v13 ps20110701